



AT LOG-IN,

INTEGRATED LOGISTICS

MEANS REACHING NEW HORIZONS

login. logística
integrada

At **LOG-IN**

your logistics become a business strategy.



The largest industries and retailers in Brazil outsource their transportation operations.

Source: ILOS - Descarbonização da logística nas empresas do Brasil, 2024



login. logística integrada

At **LOG-IN**

you can connect your cargo throughout Brazil and Mercosur.



✓ **Logistics Planning**
Greater efficiency in every operation

✓ **Safer Cargo**
Lower risk of theft and damage

✓ **Cost Reduction**
Selection of the best routes to ensure efficiency

✓ **Reduction in Road Accidents**
Trained drivers for safer driving on the roads

✓ **Logistics Decarbonization**
Up to 8x less fuel burned into the atmosphere

✓ **TVV - Multipurpose Terminal**
For an even more integrated logistics solution, we rely on a terminal with maritime, road, and rail connections

Integrated Maritime
Logistics Solutions



9

OWNED VESSELS

24.000

TEU OF MARITIME
TRANSPORT CAPACITY

Faz **LOG-IN**



+3.000

EMPLOYEES

A
GPTW

CERTIFIED COMPANY

Vila Velha
Multipurpose Terminal



350.000

TEU ANNUAL CONTAINER
HANDLING CAPACITY

108mil

M² OF TOTAL AREA

Tecmar Transportes
Warehousing
and distribution



+1.300

VEHICLES IN
ITS OWN FLEET

+50

DISTRIBUTION
CENTERS

Access Brazil and
Mercosur in full



COVERAGE IN

+2.600

CITIES ACROSS

18

BRAZILIAN STATES,
ARGENTINA AND
PARAGUAY

Part of the
MSC Group



GLOBAL LEADER IN SHIPPING,
EXPANDING SCALE,
STRENGTH, AND LOGISTICS
EFFICIENCY ACROSS BRAZIL
AND MERCOSUR

Log-In to **ACCESS** NEW **HORIZONS**



ROAD OPERATIONS

CONTAINER TRANSPORTATION

With dedicated vehicles exclusively for your cargo, this transport mode offers predictability, flexibility, and agility in routes and transit times, supported by one of the largest logistics distribution networks in the country.

FULL TRUCKLOAD (FTL)

Our own fleet of container chassis trucks enables the safe and reliable movement of large cargo volumes throughout the entire operation.

ROAD CABOTAGE

Connects road transportation with coastal shipping, allowing your cargo to move with safety, stability, and control, managed by a single logistics operator from origin to destination, ensuring cost reduction and lower CO₂ emissions.

+1.300
VEHICLES

18
STATES

2.600
CITIES

+2.000
DAILY PICKUP AND
DELIVERY POINTS

WAREHOUSING

At Log-In, warehousing and distribution are part of a *truly integrated ecosystem*.

We connect warehouses, cabotage, road transportation, and port solutions to deliver efficiency, safety, and cost reduction all with a *single partner and a seamless end-to-end operation*.

DO LOG-IN AND ACCESS:

- ✓ Receiving, sorting, and storage
- ✓ Cargo transfer from containers to trucks
- ✓ Inventory management
- ✓ Picking and packing
- ✓ Pallet reconfiguration
- ✓ Scanning
- ✓ Quality control
- ✓ Repackaging
- ✓ Labeling
- ✓ Order separation
- ✓ Palletizing
- ✓ Reporting
- ✓ Yard management
- ✓ Containerized warehousing

EFFICIENCY BEYOND THE SEA

VILA VELHA

PORT TERMINAL

- ✓ Total area of 108,000 m²
- ✓ Handling capacity of up to 350,000 TEUs per year
- ✓ Export, import, and coastal shipping cargo
- ✓ ISPS Code, ISO 9001 and ISO 14001 certifications
- ✓ Accommodates vessels up to 243 meters in length
- ✓ 86,000 tons of general cargo handled per month
- ✓ On average, 23 vessels operated and 14,000 containers handled per month

2 BERTHS WITH
450 M LENGTH

RAILWAY
CONNECTION

YARD
CAPACITY:
7,000 TEUS

15,400 M² OF
WAREHOUSE SPACE

3 TRANSTAINERS
3 PORTAINERS, 2 MHCS
6 REACH STACKERS

MARKETS OF OPERATION

VILA VELHA

PORT TERMINAL

- ✓ Agribusiness
- ✓ Automotive
- ✓ Consumer goods
- ✓ Bulk cargo
- ✓ General cargo
- ✓ Dangerous cargo
- ✓ Fertilizers
- ✓ Industry
- ✓ Offshore
- ✓ Mining products
- ✓ Rocks
- ✓ Steel industry
- ✓ Retail

STRATEGIC
LOCATION

MODERN AND
EFFICIENT
LOGISTICS HUB

COMMITMENT TO
SAFETY AND
SUSTAINABILITY

CONTINUOUS
INVESTMENT

STATE TAX
INCENTIVES

logIn. logística integrada

COASTAL SHIPPING IS NOT A TREND. IT'S A RESULT.

SHIPPING

Covering Brazil's main ports and connecting through feeder services and long-haul shipping across Mercosur (Argentina, Paraguay and Uruguay), we offer efficient, safe and sustainable logistics solutions.

Our maritime operations optimize lead times and connect markets in an integrated and strategic way.

- ✓ **Cargo security**
Fewer thefts, accidents and damages.
- ✓ **Multimodality**
Use of a single operator throughout the entire operation.
- ✓ **Sustainability**
Lower greenhouse gas emissions.
- ✓ **Cost reduction**
- ✓ **Door-to-door**
From pickup at origin to delivery at destination, with a single point of contact.
- ✓ **Capacity**
Transport of large volumes and oversized cargo with greater safety.
- ✓ **Split cargo operations with capillarity**
- ✓ **Geographic coverage**
- ✓ **Reliability**
- ✓ **Service regularity**

WEEKLY SAILINGS

**YOUR CARGO
ON THE RIGHT
SCHEDULE**



WEEKLY PORT CALLS

PORT OF ORIGIN	NB	SB
Manaus	0	2
Pecém	2	2
Suape	2	3
Salvador	2	1
Rio de Janeiro	1	0
Itaguaí	1	0
Vitória	0	1
Santos	4	1
Paranaguá	1	0
Navegantes	2	1
Rio Grande	1	0
Buenos Aires	1	0
La Plata	1	0

SERVICES

NB	SB
-	SMN, SEA
SMN, SEA	SMN, SEA
SMN, SEA	SAS, SMN, SEA
SMN, SEA	SAS
SSR	-
SMN	-
-	SSR
SSR, SAS, SEA, SMN	SAS
SIP	-
SAS, SEA	SAS
SAS	-
SAS	-
SAS	-

EXPRESS SERVICE

AMAZONAS

Connecting the best of the North to all of Brazil!
Agile routes and full control of your cargo, from shipping to warehousing.



NORTHBOUND ROUTES

BOARDING	ARRIVAL					
	ITG	SSZ	SUA	PEC	MAO	
SSZ	2	5	7	9	14	
NVT	-	3	5	7	12	
SSA	-	-	2	4	9	
SUA	-	-	-	2	7	
PEC	-	-	-	-	5	
DEADLINE	ETA			ETS		
Santos	THU - 12 PM		FRI		SAT	
Itaguai	FRI - 6 PM		MON		MON	
Salvador	WED - 12 PM		THU		THU	
Suape	FRI - 11 AM		SAT		SAT	
Pecém	FRI - 5 PM		MON		MON	

SOUTHBOUND ROUTES

BOARDING	ARRIVAL				
	PEC	SUA	SSZ	ITG	
MAO	4	6	10	13	
PEC	-	1	5	-	
SSZ	-	-	4	-	
DEADLINE	ETA		ETS		
Manaus	FRI - 11 PM		SAT		TUE
Pecém	FRI - 5 PM		SAT		SUN
Suape	SAT - 3 PM		MON		MON

➔ NORTHBOUND ROUTES

➔ SOUTHBOUND ROUTES

SERVICE ATLÂNTICO SUL

Complete route connecting Brazil to Mercosur with quality, efficiency, and excellent transit time.



NORTHBOUND ROUTES							
BOARDING		ARRIVAL					
	LA PLATA	RIG	NVT	SSZ	SUA	PEC	SSA
BUE		2	5	6	11	14	17
LA PLATA	-	2	5	6	11	14	17
RIG	-	-	2	3	8	11	14
NVT	-	-	-	1	6	8	11
SSZ	-	-	-	-	4	7	10
DEADLINE		ETA		ETS			
Buenos Aires		SAT - 12 PM		SUN	TUE		
La Plata		MON - 6 PM		TUE	TUE		
Rio Grande		THU - 12 PM		THU	FRI		
Navegantes		FRI - 3 PM		SUN	MON		
Santos		MON - 9 AM		MON	TUE		

SOUTHBOUND ROUTES							
BOARDING		ARRIVAL					
	PEC	SSA	SSZ	NVT	BUE	LA PLATA	ASSUNÇÃO
SUA	2	5	9	10	16	16	27
PEC	-	3	7	8	12	13	25
SSA	-	-	3	5	8	10	21
SSZ	-	-	-	1	4	6	18
NVT	-	-	-	-	3	5	11
DEADLINE		ETA		ETS			
Suape		FRI - 6 PM		SAT	SUN		
Pecém		MON - 12 PM		FRI	WED		
Salvador		THU - 6 PM		FRI	SAT		
Santos		MON - 12 PM		TUE	WED		
Navegantes		WED - 11 AM		THU	FRI		



SERVICE

INTEGRAÇÃO PARANÁ

The best of the South of the country delivered with the care and speed that only Log-In can offer!

NORTHBOUND ROUTES

BOARDING	ARRIVAL		
	SUA	PEC	
SSZ	5	7	
PNG	4	6	
DEADLINE	ETA	ETS	
Santos	(Does not operate)	-	-
Paranaguá	TUE - 12 PM	FRI	SUN

SOUTHBOUND ROUTES

BOARDING	ARRIVAL		
	SSZ	PNG	
SUA	4	5	
DEADLINE	ETA	ETS	
Suape	(Discharge only)	-	-

 NORTHBOUND ROUTES

 SOUTHBOUND ROUTES



log in. logística integrada

SERVICE

SHUTTLE VITÓRIA

The fastest and most efficient way to make your deliveries between Vitória, São Paulo, and Rio de Janeiro.

NORTHBOUND ROUTES				SOUTHBOUND ROUTES			
BOARDING	ARRIVAL			BOARDING	ARRIVAL		
RIO	VIX	1		VIX	RIO	1	
DEADLINE		ETA	ETS	DEADLINE		ETA	ETS
Rio de Janeiro	WED - 6 PM	-	-	Vitória	MON - 12 PM	-	-



SERVICE

SHUTTLE RIO

The fastest and most efficient way to make your deliveries between Vitória, São Paulo, and Rio de Janeiro.

NORTHBOUND ROUTES

BOARDING	ARRIVAL		
	RIO	VIX	SSZ
SSZ	1	5	6
RIO	1	5	6
DEADLINE	ETA	ETS	
Santos	(Does not operate)	-	-
Buenos Aires	SAT - 12 PM	SUN	TUE
Montevideo	MON - 6 PM	TUE	TUE
Itajaí	THU - 12 PM	THU	FRI

SOUTHBOUND ROUTES

BOARDING	ARRIVAL		
	SSZ		
VIX	2		
DEADLINE	ETA	ETS	
Vitória	MON - 11 AM	SUN	MON



 NORTHBOUND ROUTES

 SOUTHBOUND ROUTES

SERVICE

MANAUS

Connecting the best of the North to all of Brazil!
Fast routes, complete control over your cargo,
from shipment to storage.



NORTHBOUND ROUTES

BOARDING	ARRIVAL				
	ITG	SSZ	SUA	PEC	MAO
SSZ	2	5	7	9	14
NVT	-	3	5	7	12
SSA	-	-	2	4	9
SUA	-	-	-	2	7
PEC	-	-	-	-	5
DEADLINE	ETA		ETS		
Santos	THU - 12 PM		FRI		SAT
Itaguaí	FRI - 6 PM		MON		MON
Salvador	WED - 12 PM		THU		THU
Suaçê	FRI - 11 AM		SAT		SAT
Pecém	FRI - 5 PM		MON		MON

SOUTHBOUND ROUTES

BOARDING	ARRIVAL			
	PEC	SUA	SSZ	ITG
MAO	4	6	10	13
PEC	-	1	5	-
SSZ	-	-	4	-
DEADLINE	ETA		ETS	
Manaus	FRI - 11 PM		SAT	TUE
Pecém	FRI - 5 PM		SAT	SUN
Suaçê	SAT - 3 PM		MON	MON

➔ NORTHBOUND ROUTES

➔ SOUTHBOUND ROUTES

At **LOG-IN**

Connect your cargo from North to South. **By land, by sea, in its totality.**

NORTH

- ✓ Coastal Shipping (2 Services with Origin or Destination in the Region)
- ✓ Shortest Transit Time
Manaus ↔ Santos (9 days)
- ✓ Road Operations
(Less Than Truckload, Container, and Full Truckload)
- ✓ 2 Warehouses (Manaus Industrial District and Boa Vista – RR)
- ✓ Road Cabotage via Port of Manaus
- ✓ Special and Customized Projects
- ✓ Accessory Services and DEPOT

NORTHEAST

- ✓ Coastal Shipping with Connections Northeast ↔ South/Southeast and North ↔ Northeast (Weekly Departures)
- ✓ Road Operations
(Partial Loads, Containers, and Full Truckloads)
- ✓ Door-to-Door Transportation
- ✓ 8 Warehouses
(CE, RN, PB, PE, AL, SE, and BA)
- ✓ Road Cabotage via the Ports of Pecém, Suape, and Salvador
- ✓ Special and Customized Projects
- ✓ Accessory Services and DEPOT

MIDWEST

- ✓ Road Operations
(Partial Loads, Containers, and Full Truckloads)
- ✓ 1 Warehouse (GO)
- ✓ Special and Customized Projects
- ✓ Ancillary Services

SOUTHEAST

- ✓ Coastal shipping with weekly departures from Santos and Rio de Janeiro
- ✓ Best Transit Time
Santos ↔ Salvador (5 days)
- ✓ Feeder services connecting Rio de Janeiro and Vitória to the main ports
- ✓ Road Operations
(Less than truckload, container, and full truckload)
- ✓ Own Multipurpose Terminal in Vila Velha (ES)
- ✓ Road Cabotage via the Ports of Vila Velha and Santos
- ✓ 4 Warehouses (SP and ES)
- ✓ Special and Customized Projects
- ✓ Accessory Services and DEPOT

SOUTH

- ✓ Coastal shipping with multiple weekly departures (SC, RS, and PR)
- ✓ Best transit time
Navegantes ↔ Salvador (4 days)
- ✓ Direct service
Navegantes ↔ Manaus (15 days, no transshipment)
- ✓ Multimodal Terminal in Itajaí (Road, Rail, and Maritime)
- ✓ Road Cabotage via the Port of Navegantes
- ✓ 6 Warehouses (PR, SC, and RS)
- ✓ Special and Customized Projects
- ✓ Ancillary Services and DEPOT

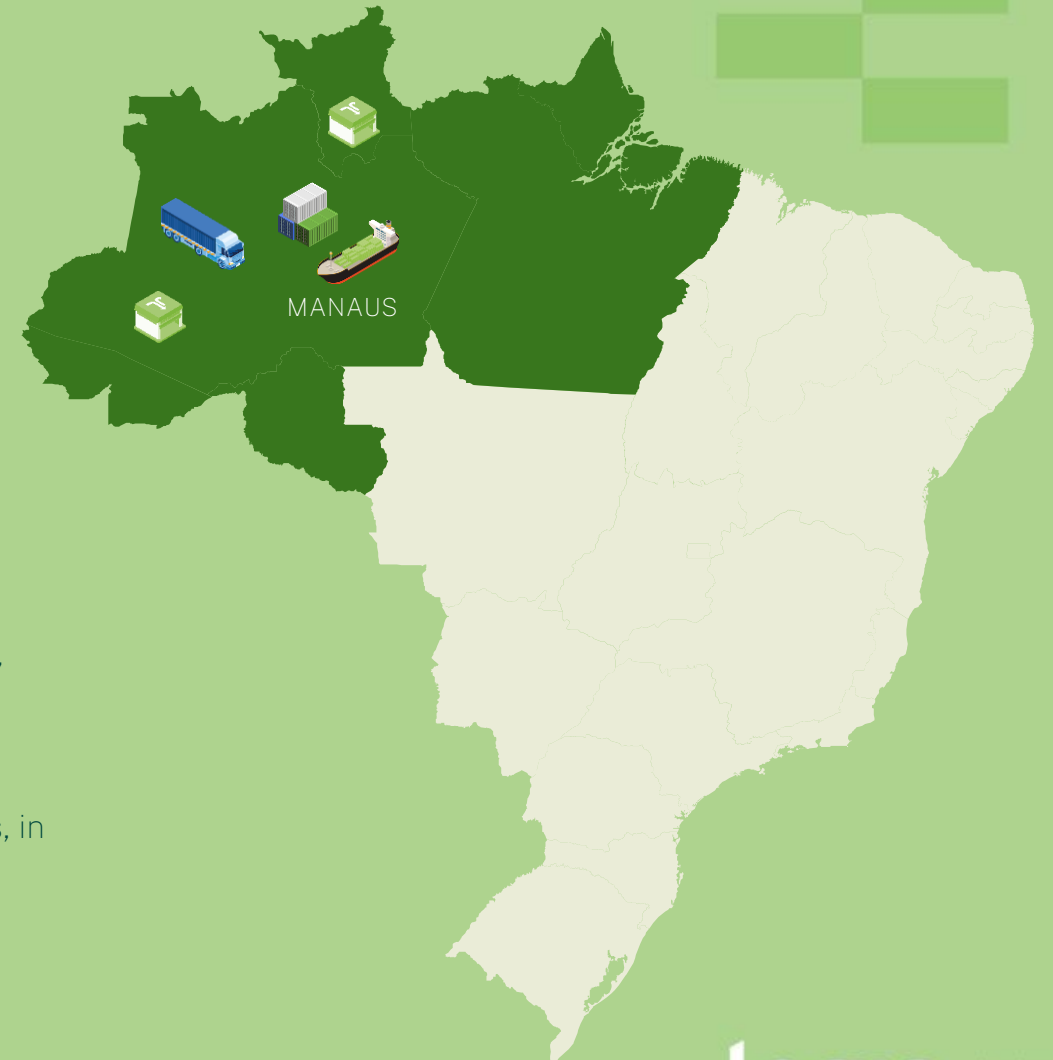
MERCOSUR

- ✓ Regular Stopovers in Argentina (Buenos Aires and La Plata)
- ✓ Connecting Ports for Cargo Transshipment from Brazil and Paraguay
- ✓ Stopovers in Paraguay (Port of Asunción)
- ✓ River Transport with Crossing of the Paraná River by Barge
- ✓ Special and Customized Projects

OUR OPERATIONS

NORTHERN REGION

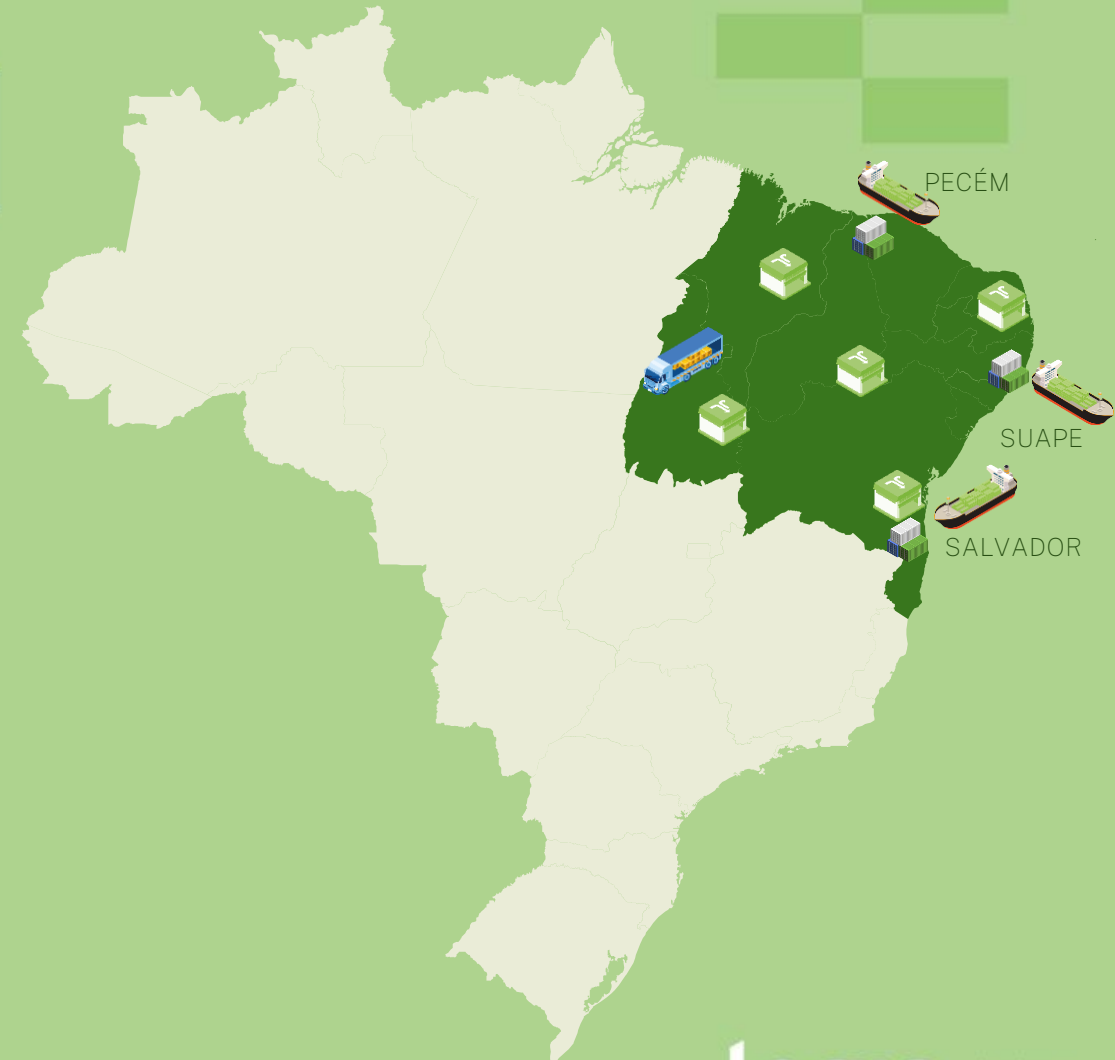
- 2 coastal shipping services with origin or destination;
- Door-to-door transportation and/or customized projects;
- Shortest transit time from Manaus to Santos, only 9 days;
- Ancillary services: Container stuffing and unstuffing, labeling, counting, sorting, consolidation, and deconsolidation;
- Road operations (less than truckload, container, and full truckload);
- Cargo storage with our own terminal in the Industrial District of Manaus, in addition to a terminal in Boa Vista (RR);
- DEPOT;
- Road cabotage operations through the Port of Manaus;
- Dedicated office and team in Manaus.



OUR OPERATIONS

NORTHEAST REGION

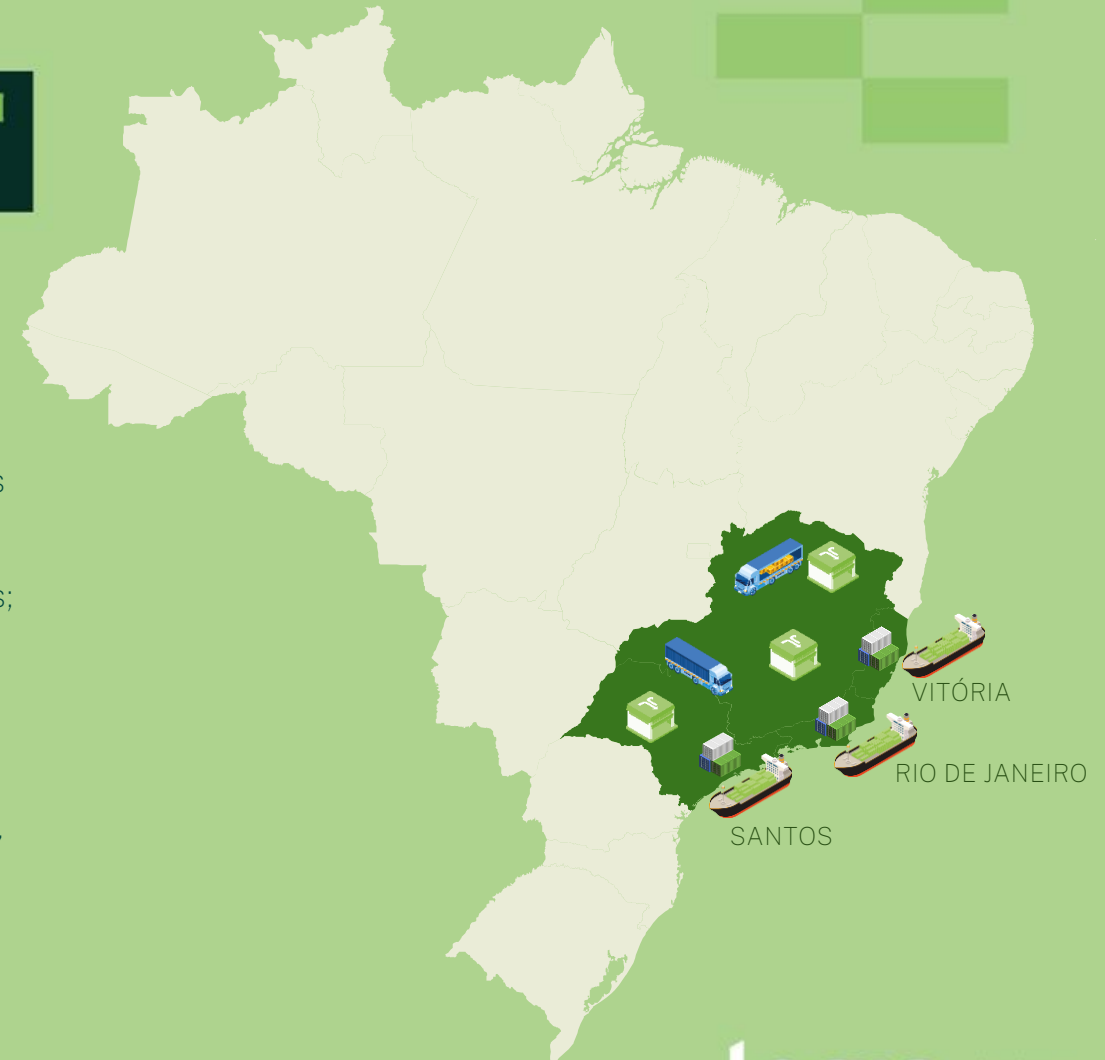
- Northeast <> South/Southeast and North <> Northeast maritime connections with weekly departures;
- Road operations (less than truckload, container, and full truckload);
- Door-to-door transportation and/or customized projects;
- Ancillary services: Container stuffing and unstuffing, labeling, counting, sorting, consolidation, and deconsolidation;
- 26,000 m² warehouse in Recife;
- Road-sea transport operations through the ports of Pecém, Suape, and Salvador;
- DEPOT.



OUR OPERATIONS

SOUTHEAST REGION

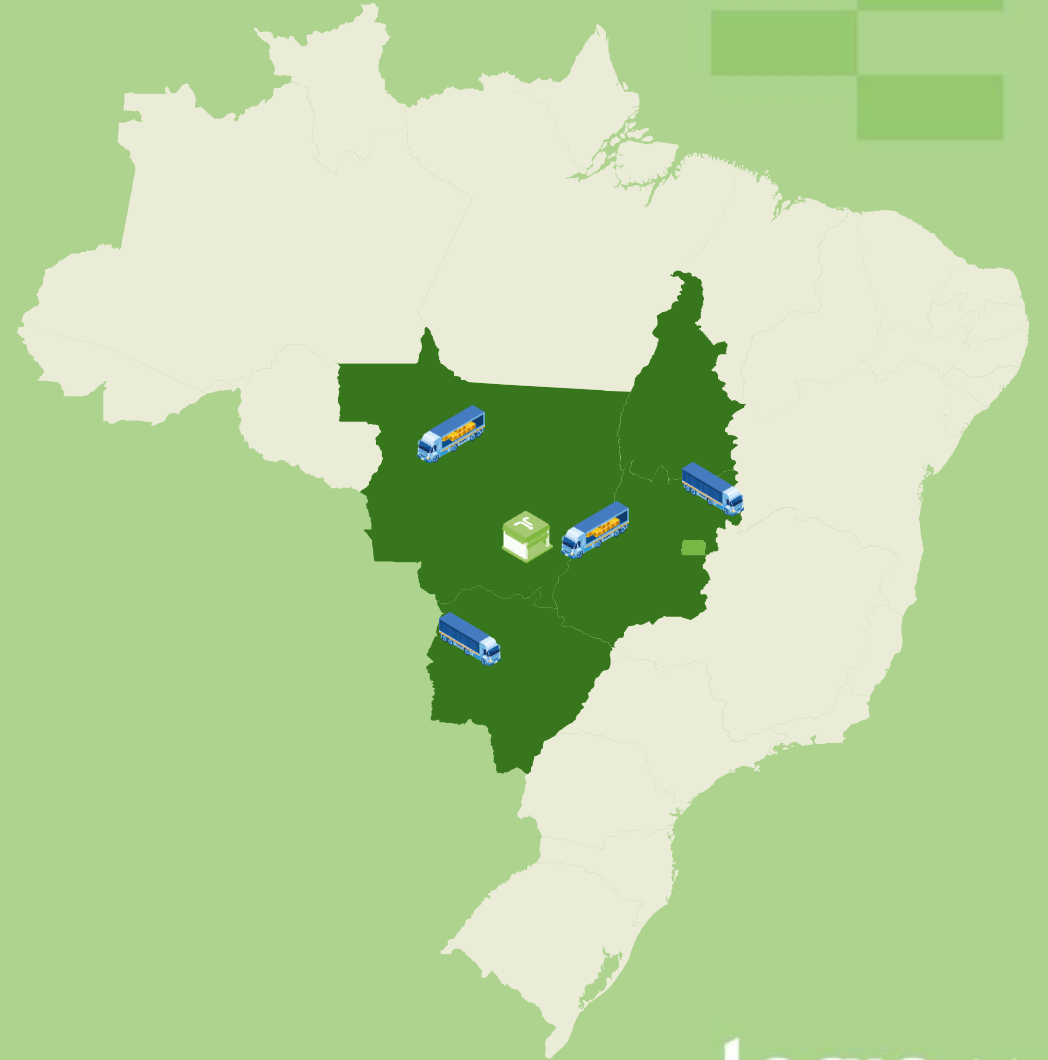
- Coastal shipping with weekly departures from Santos (DPW and Santos Brasil) and Rio de Janeiro (Sepetiba Tecon, Multi Rio, and Itaguaí);
- Feeder services connecting Rio and Vitória to the country's largest ports;
- Road operations (less than truckload, container, and full truckload);
- Best transit time between Santos and Salvador;
- Storage;
- Ancillary services: Container stuffing and unstuffing, labeling, counting, sorting, consolidation, and deconsolidation;
- Own multipurpose terminal in Vila Velha (ES);
- DEPOT.



OUR OPERATIONS

MIDWEST REGION

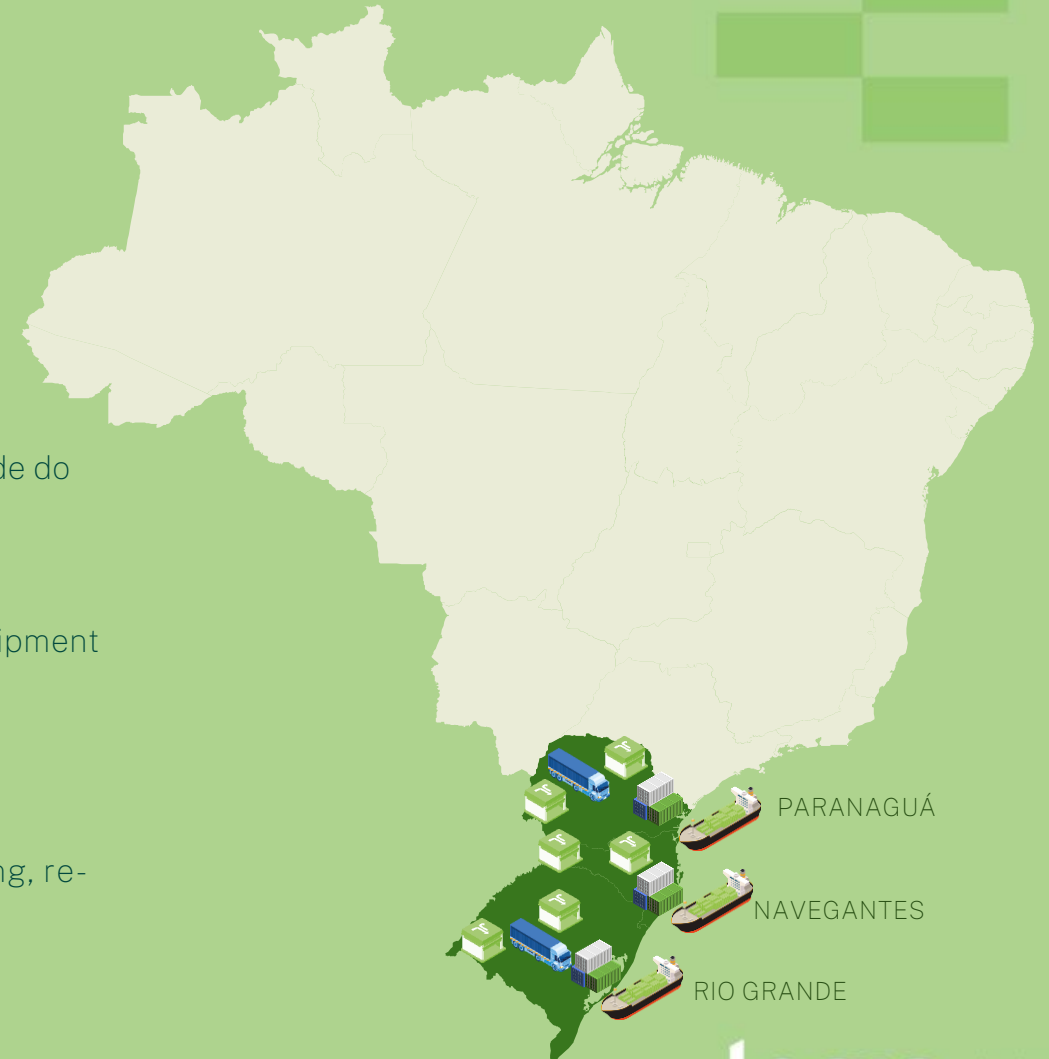
- Road Operations (less-than-truckload, container, and full truckload);
- Warehousing.



OUR OPERATIONS

SOUTH REGION

- Coastal shipping with two weekly departures in SC, one from Rio Grande do Sul, and one from Paraná;
- Best transit time to SSA - (NVT x SSA in four days);
- NVT x MAO: only direct service with 15 days transit time without transshipment to other services;
- From the south to the northeast in up to 3 days (NVT x SSA route)
- Multimodal terminal in Itajaí: integrates road, rail, and maritime modes. Performs storage and cross-docking operations, as well as cargo sorting, re-shipping, and transit-point services;
- Road cabotage operations through the Port of Navegantes;
- Storage;
- Road operations (less-than-truckload, container, and full truckload);



OUR OPERATIONS

MERCOSUL

- Regular stops in Argentina: TRP (Port of Buenos Aires) and TecPlata (Port of La Plata) terminals, both in Buenos Aires;
- Maritime connection ports for transshipment of cargo from Brazil and/or Paraguay;
- Stopover in Paraguay: São José and Puerto Seguro terminals, in the Port of Asunción;
- River transport with crossing of the Paraná River by barge;



OUR VESSELS

Log-In Jacarandá

LOG-IN BRAZILIAN SHIP
SHIPYARD BRAZIL, YEAR 2011
CAPACITY (TEU) 2,800
SERVICE SEA



Log-In Jatobá

LOG-IN BRAZILIAN SHIP
SHIPYARD BRAZIL, YEAR 2011
CAPACITY (TEU) 2,800
SERVICE SAS



Log-In Polaris

LOG-IN BRAZILIAN SHIP
CHINA SHIPYARD, YEAR 2019
CAPACITY (TEU) 2,700
SEA SERVICE



Log-In Pantanal

LOG-IN BRAZILIAN SHIP
SHIPYARD GERMANY, YEAR 2007
CAPACITY (TEU) 1,700
SSR SERVICE



Log-In Discovery

LOG-IN BRAZILIAN SHIP
CHINA SHIPYARD, YEAR 2014
CAPACITY (TEU) 2,550
SAS SERVICE



Log-In Endurance

LOG-IN BRAZILIAN SHIP
CHINA SHIPYARD, YEAR 2011
CAPACITY (TEU) 2,800
SAS SERVICE



Log-In Evolution

LOG-IN BRAZILIAN SHIP
CHINA SHIPYARD, YEAR 2024
CAPACITY (TEU) 3,158
SEA SERVICE



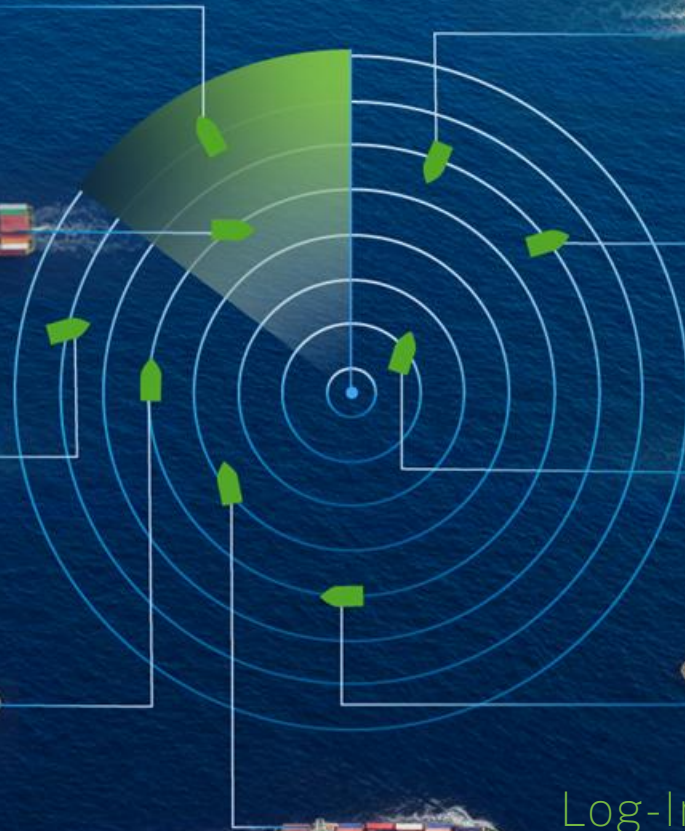
Log-In Experience

LOG-IN BRAZILIAN SHIP
CHINA SHIPYARD, YEAR 2024
CAPACITY (TEU) 3,158
SEA SERVICE



Log-In Resiliente

LOG-IN BRAZILIAN SHIP
SHIPYARD POLAND, YEAR 2006
CAPACITY (TEU) 2,700
SSV SERVICE



OUR CONTAINERS

Dry Box 40'



MAXIMUM CARGO CAPACITY: 26.780 KG

TARE WEIGHT (EMPTY CONTAINER WEIGHT): 3.000 KG

High-Cube 40'



MAXIMUM CARGO CAPACITY: 26.630 KG

TARE WEIGHT (EMPTY CONTAINER WEIGHT): 3.850 KG

Dry Box 20'



MAXIMUM CARGO CAPACITY: 28.280 KG

TARE WEIGHT (EMPTY CONTAINER WEIGHT): 2.000 KG

Reefer 40' RH



MAXIMUM CARGO CAPACITY: 29.300 KG

TARE WEIGHT (EMPTY CONTAINER WEIGHT): 4.700 KG

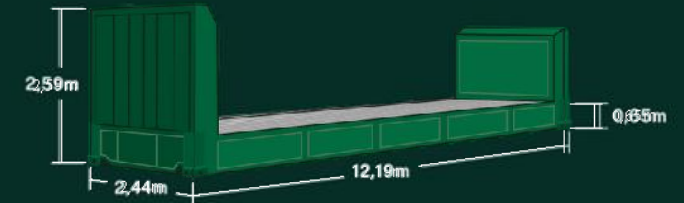
Open Top



MAXIMUM CARGO CAPACITY: 26.630 KG

TARE WEIGHT (EMPTY CONTAINER WEIGHT): 3.850 KG

Flat Rack 40'



MAXIMUM CARGO CAPACITY: 45.000 KG

TARE WEIGHT (EMPTY CONTAINER WEIGHT): 5.000 KG

TECHNOLOGY

to integrate Brazil and Mercosur

From origin to destination, we combine technology and operational intelligence to deliver greater safety, control, and efficiency.

As a result, every route becomes more predictable, integrated, and aligned with the pace of your business.



LOG-AI PLATFORM

Scheduling your deliveries is much more convenient and efficient with our exclusive

platform. With Log-Ai, you ensure greater control over your deliveries, with less bureaucracy and all the information in a single portal.



CONTROL TOWER

At Log-In, your cargo is always tracked.

With a specialized team, our control tower ensures real-time visibility of your cargo movements across Brazil.

LOGGING IN MEANS ACCESSING
A NEW RHYTHM OF INTEGRATION:
DIGITAL, INTELLIGENT,
AND WITHOUT BORDERS.

How can **MARITIME INTEGRATION**
reduce environmental impact? **

TCO₂e*
10,8

ROAD
TRANSPORTATION

Up to 74% reduction in
total emissions*

TCO₂e*
2,8

ROAD + MARITIME
SHIPPING



Access our GHG Calculator
and calculate the emissions
for your route.

** Simulation of the route from Campinas (SP) to Camaragibe (PB), with a freight load of 50 tons. Distance: 2,700 km. * Tons of CO₂ equivalent.

Discover our **PARTNERS**



Grupo Quattror • Everton Wutke



NEW BUSINESS DIRECTOR

“Log-In’s TVV is a port that listens to customer needs and is able to adapt to meet them. In a universe as dynamic and changing as international trade, this becomes a major differentiator.”

Timbro • Adriana Mazará



DIRECTOR OF OPERATIONS - LOGISTICS

“Since the beginning of our partnership with Log-In, we have seen significant progress in our operations. Process efficiency and the team’s commitment have brought greater security and predictability to our logistics. This allows us to better serve our customers and plan for the future with confidence.”

BBC Chartering • Daniel Fernandes



“We would like to thank Log-In for their excellent work in handling break bulk/project cargo, always demonstrating professionalism, dedication, and focus on finding the best solutions on a daily basis. The partnership and commitment of the entire team make a difference and add great value to our operations.”

Discover our **PARTNERS**



Elgin • Roberta Bourg



LOGISTICS MANAGER

Log-In is one of our strategic partners that combines efficiency, professionalism, and commitment, adding continuous value to our coastal shipping operations.

Seara • Gabriel Lins



LOGISTICS SPECIALIST

"The partnership with Log-In has been fundamental in making our logistics operation more sustainable and efficient. The use of coastal shipping directly contributes to the Net Zero 2040 project, JBS's commitment to zero greenhouse gas emissions – reducing the intensity of direct and indirect emissions and offsetting all residual emissions. This change represents an important step forward in building an increasingly responsible logistics chain that is aligned with our environmental goals."

Bem Estar Alimentos • Wagner Schrank



"It is a pleasure to be a Log-In customer. We are always served with professionalism, dedication, and punctuality. We entrust 80% of our coastal shipping operations to Log-In with confidence and certainty that the coastal shipping part will be satisfactory for on-time delivery to our customers, as it has a team that inspires confidence and shows true respect and dedication on a daily basis, reinforcing its commitment to excellence."

Integrated logistics means

LOG-IN

It's time to turn the key.
Unlock new possibilities in Brazil and Mercosur
with a partner that understands integration,
intelligence and results.
Log-In with us.



Scan the QR code and
talk to one of our
specialists.

login. logística
integrada